



RECEIVED
Waverley Council
Application No: DA-533/2017/1/A
Date Received: 01/10/2020

Architecture
Interior Design
Landscape Architecture
Urban Design
Graphic Design

CLUB BONDI JUNCTION RSL

SECTION 4.55

VIEW LOSS ANALYSIS

For Capital Corporation & Bondi Junction RSL
SEPTEMBER 2020

CONTENTS

-

Issue	Title	Date	Prepared	Checked
1	View loss analysis - S4.55	11/09/2020	MF/VB	NT
2				
3				
4				
5				
6				
7				
8				

NOMINATED NSW REGISTERED ARCHITECTS:

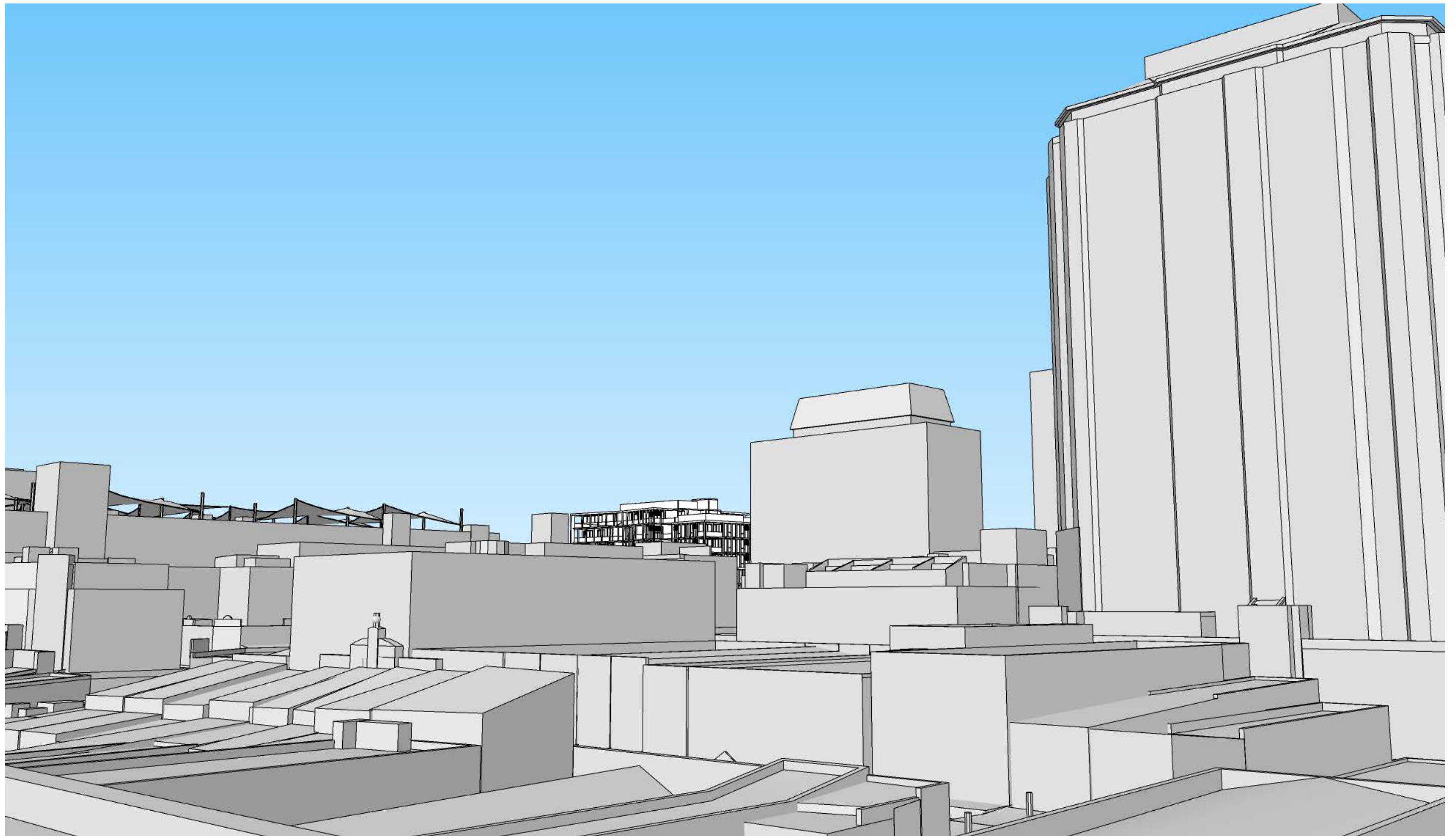
Mark Sheldon 3990 / Lisa-Maree Carigan 7568 / Michael Mandel 4252

CONTENTS

VIEW LOSS ASSESSMENT

1.0	MERITON SUITES WEST TOWER (95 - 97 GRAFTON STREET)	5
	RL 93.35 - EYE LEVEL STANDING AT PODIUM LEVEL	6
	RL 115.75 - EYE LEVEL STANDING AT MID TOWER LEVEL	8
	RL 133.65 - EYE LEVEL STANDING AT PENTHOUSE LEVEL	10
2.0	MERITON SUITES EAST TOWER (95 - 97 GRAFTON STREET)	13
	RL 93.35 - EYE LEVEL STANDING AT PODIUM LEVEL	14
	RL 115.75 - EYE LEVEL STANDING AT MID TOWER LEVEL	16
	RL 149.75 - EYE LEVEL STANDING AT PENTHOUSE LEVEL	18
3.0	EASTGATE WEST TOWER (71 - 85 SPRING STREET)	21
	RL 97.35 - EYE LEVEL STANDING AT PODIUM LEVEL	22
	RL 115.75 - EYE LEVEL STANDING AT MID TOWER LEVEL	24
	RL 150 - EYE LEVEL STANDING AT PENTHOUSE LEVEL	26
4.0	EASTGATE EAST TOWER (71 - 85 SPRING STREET)	29
	RL 97.35 - EYE LEVEL STANDING AT PODIUM LEVEL	30
	RL 115.75 - EYE LEVEL STANDING AT MID TOWER LEVEL	32
	RL 150 - EYE LEVEL STANDING AT PENTHOUSE LEVEL	34
5.0	GENOA TOWER (80 EBLEY STREET)	37
	RL 105.5 - EYE LEVEL STANDING AT MID TOWER LEVEL	38
	RL 111.2 - EYE LEVEL STANDING AT UPPER TOWER LEVEL	40
	RL 128.37 - EYE LEVEL STANDING AT PENTHOUSE LEVEL	42

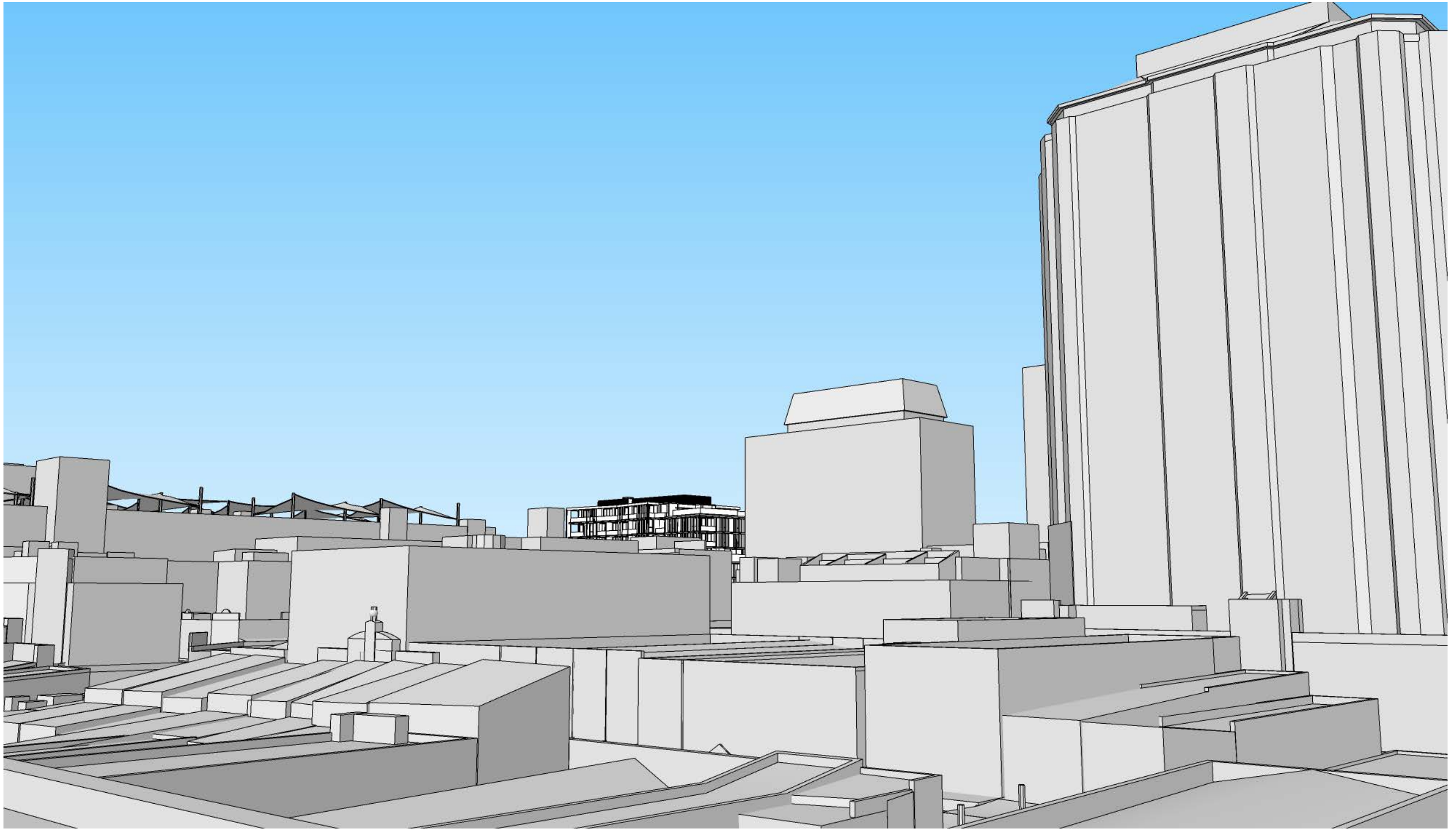
1.0 MERITON SUITES WEST TOWER (95 - 97 GRAFTON STREET)



VIEW A - DA APPROVED

RL 93.35 - EYE LEVEL STANDING AT PODIUM LEVEL

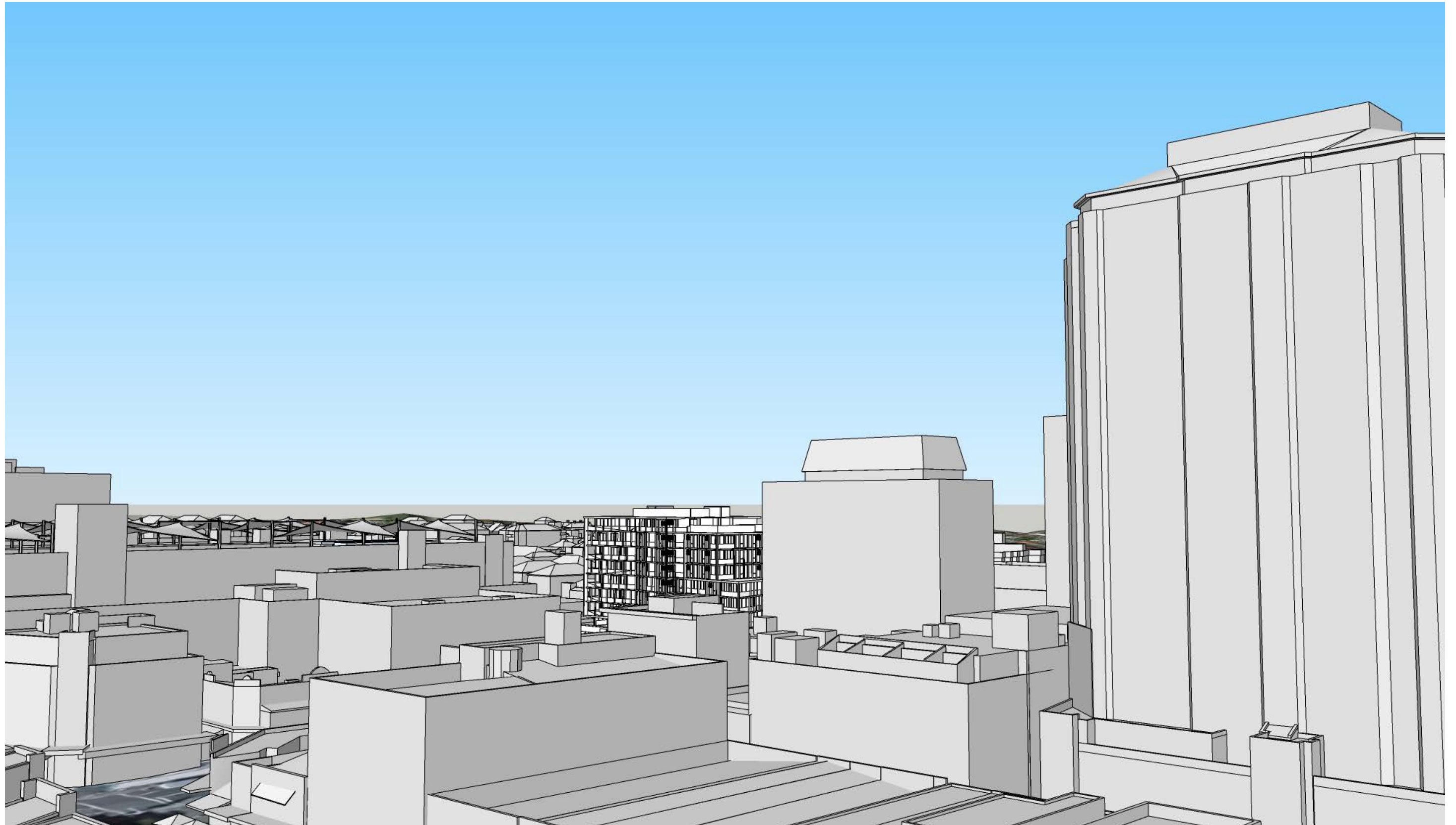
MERITON SUITES WEST TOWER (95 -97 GRAFTON STREET)



VIEW A - SECTION 4.55

RL 93.35 - EYE LEVEL STANDING AT PODIUM LEVEL

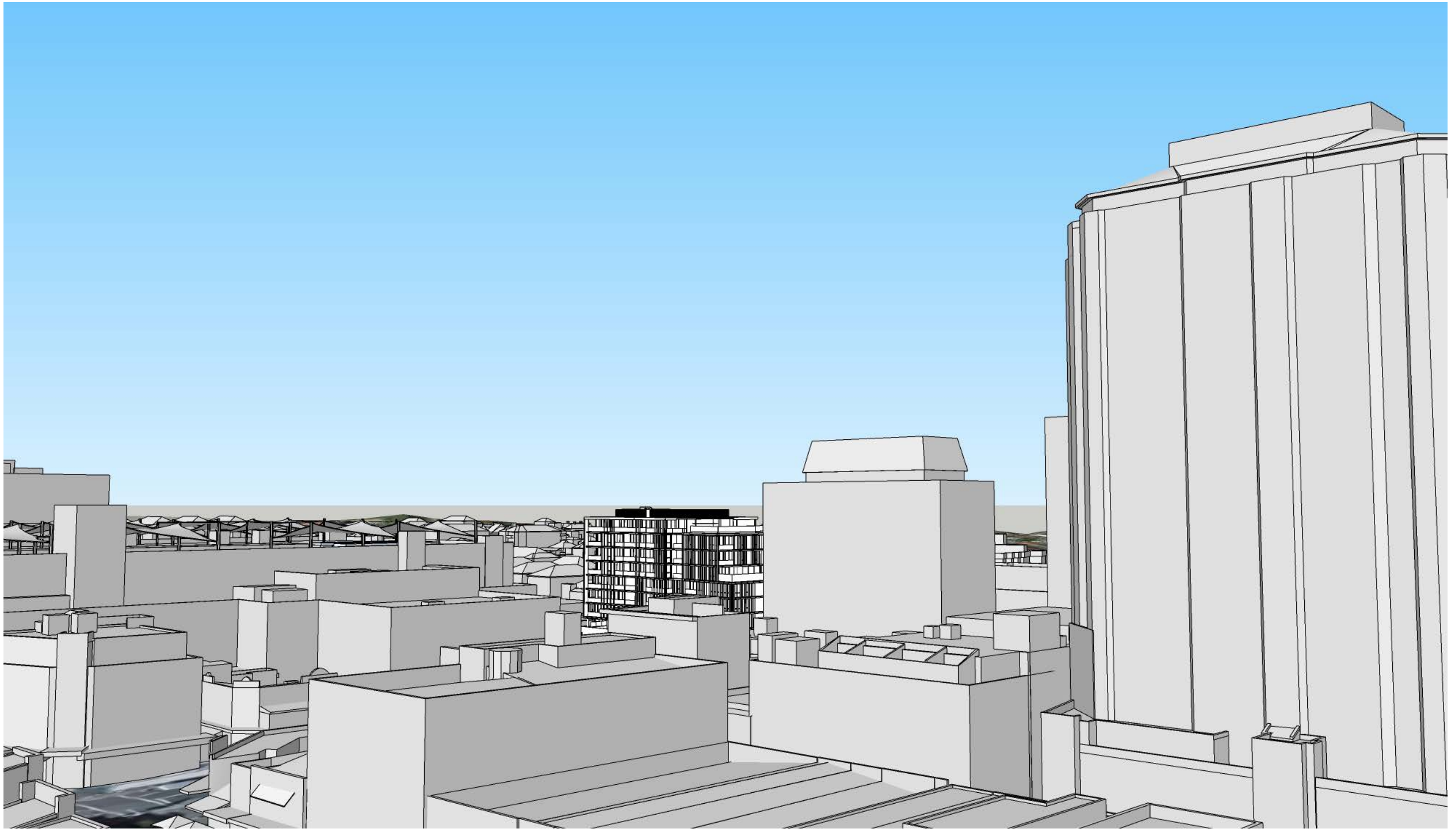
MERITON SUITES WEST TOWER (95 -97 GRAFTON STREET)



VIEW A - DA APPROVED

RL 115.75 - EYE LEVEL STANDING AT MID TOWER LEVEL

MERITON SUITES WEST TOWER (95 -97 GRAFTON STREET)



VIEW A - SECTION 4.55

RL 115.75 - EYE LEVEL STANDING AT MID TOWER LEVEL

MERITON SUITES WEST TOWER (95 -97 GRAFTON STREET)



VIEW A - DA APPROVED

RL 133.65 - EYE LEVEL STANDING AT MID TOWER LEVEL

MERITON SUITES WEST TOWER (95 -97 GRAFTON STREET)



VIEW A - SECTION 4.55

RL 133.65- EYE LEVEL STANDING AT MID TOWER LEVEL

MERITON SUITES WEST TOWER (95 -97 GRAFTON STREET)

2.0 MERITON SUITES EAST TOWER (95 - 97 GRAFTON STREET)



VIEW B - DA APPROVED

RL 93.35 - EYE LEVEL STANDING AT PODIUM LEVEL

MERITON SUITES EAST TOWER (95 - 97 GRAFTON STREET)



VIEW B - SECTION 4.55

RL 93.35 - EYE LEVEL STANDING AT PODIUM LEVEL

MERITON SUITES EAST TOWER (95 - 97 GRAFTON STREET)



VIEW B- DA APPROVED

RL 115.75 - EYE LEVEL STANDING AT MID TOWER LEVEL

MERITON SUITES EAST TOWER (95 -97 GRAFTON STREET)



VIEW B - SECTION 4.55

RL 115.75 - EYE LEVEL STANDING AT MID TOWER LEVEL

MERITON SUITES EAST TOWER (95 -97 GRAFTON STREET)



VIEW B - DA APPROVED

RL 149.75 - EYE LEVEL STANDING AT MID TOWER LEVEL

MERITON SUITES EAST TOWER (95 - 97 GRAFTON STREET)

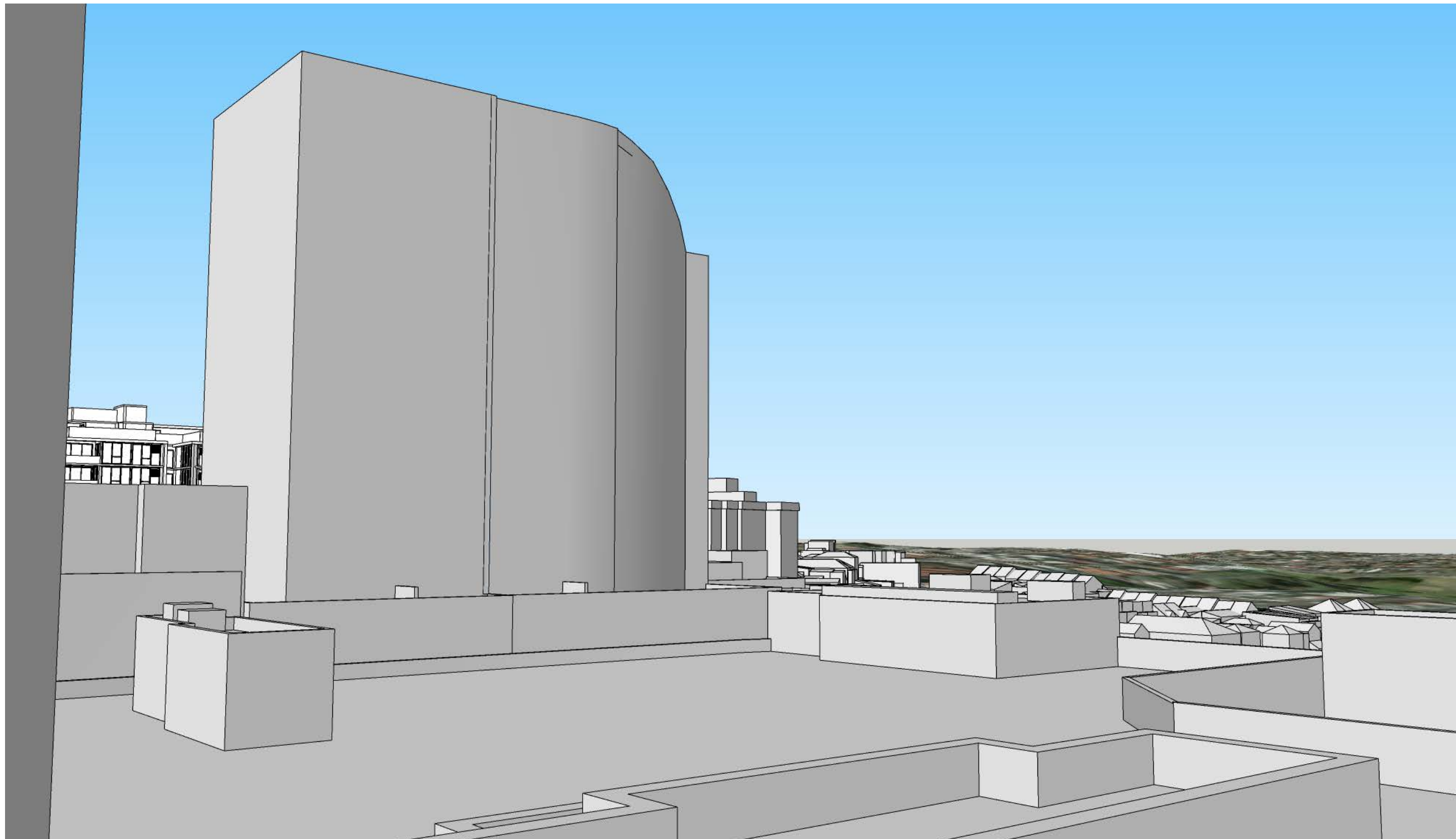


VIEW B - SECTION 4.55

RL 149.75 - EYE LEVEL STANDING AT MID TOWER LEVEL

MERITON SUITES EAST TOWER (95 - 97 GRAFTON STREET)

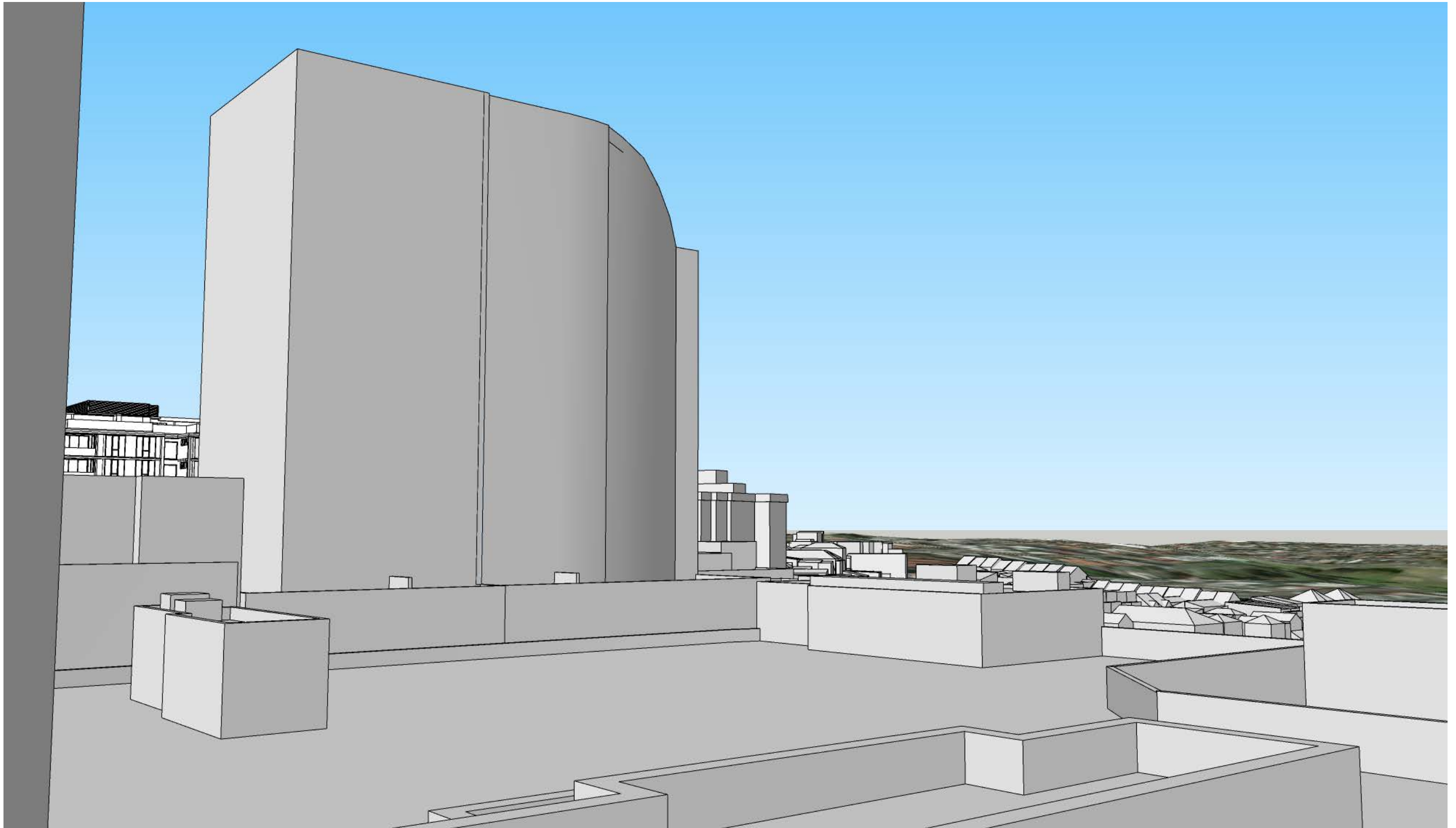
3.0 EASTGATE WEST TOWER (71-85 SPRING STREET)



VIEW C - DA APPROVED

RL 97.35 - EYE LEVEL STANDING AT PODIUM LEVEL

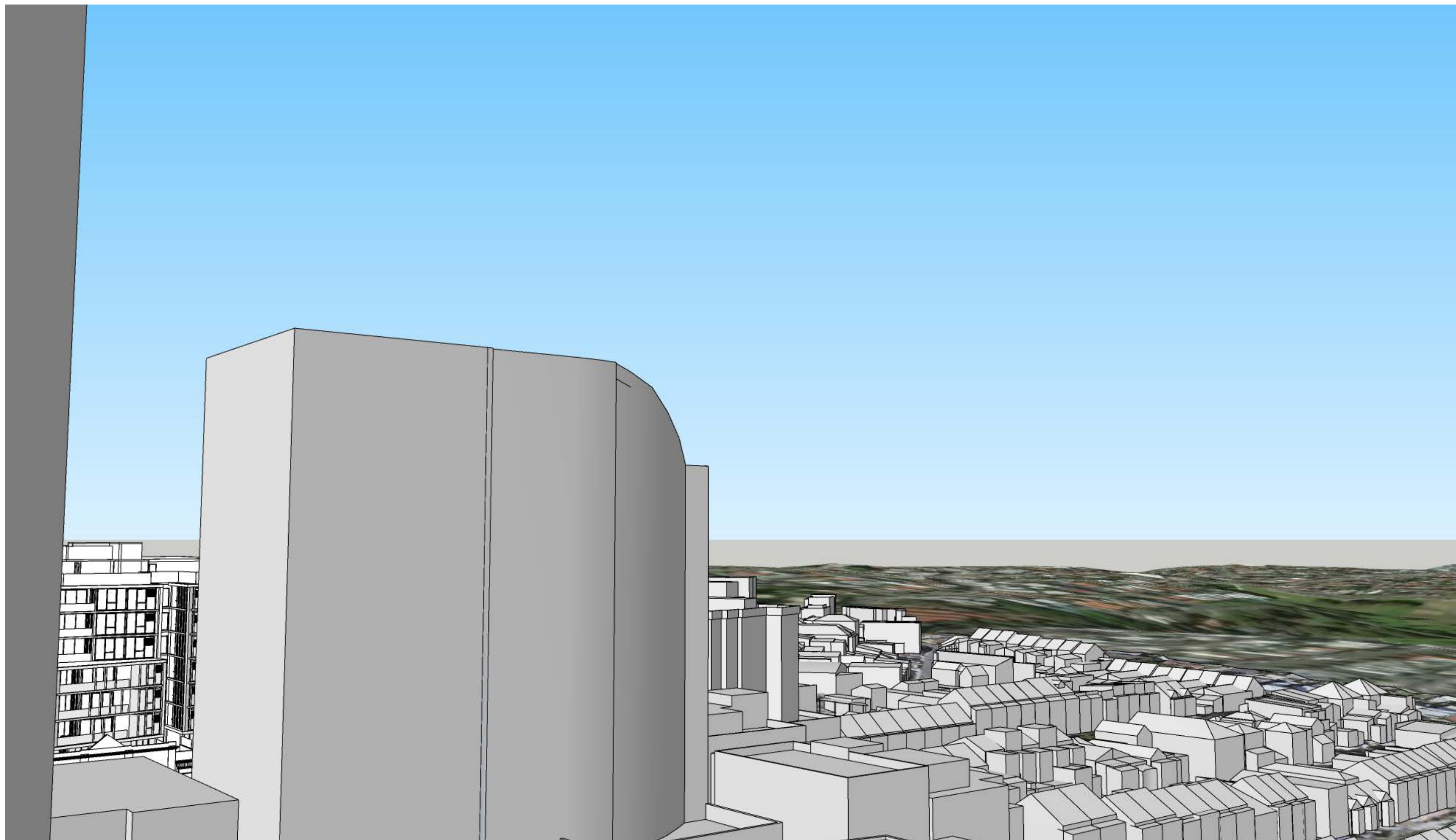
EASTGATE WEST TOWER (71 - 85 SPRING STREET)



VIEW C - SECTION 4.55

RL 97.35 - EYE LEVEL STANDING AT PODIUM LEVEL

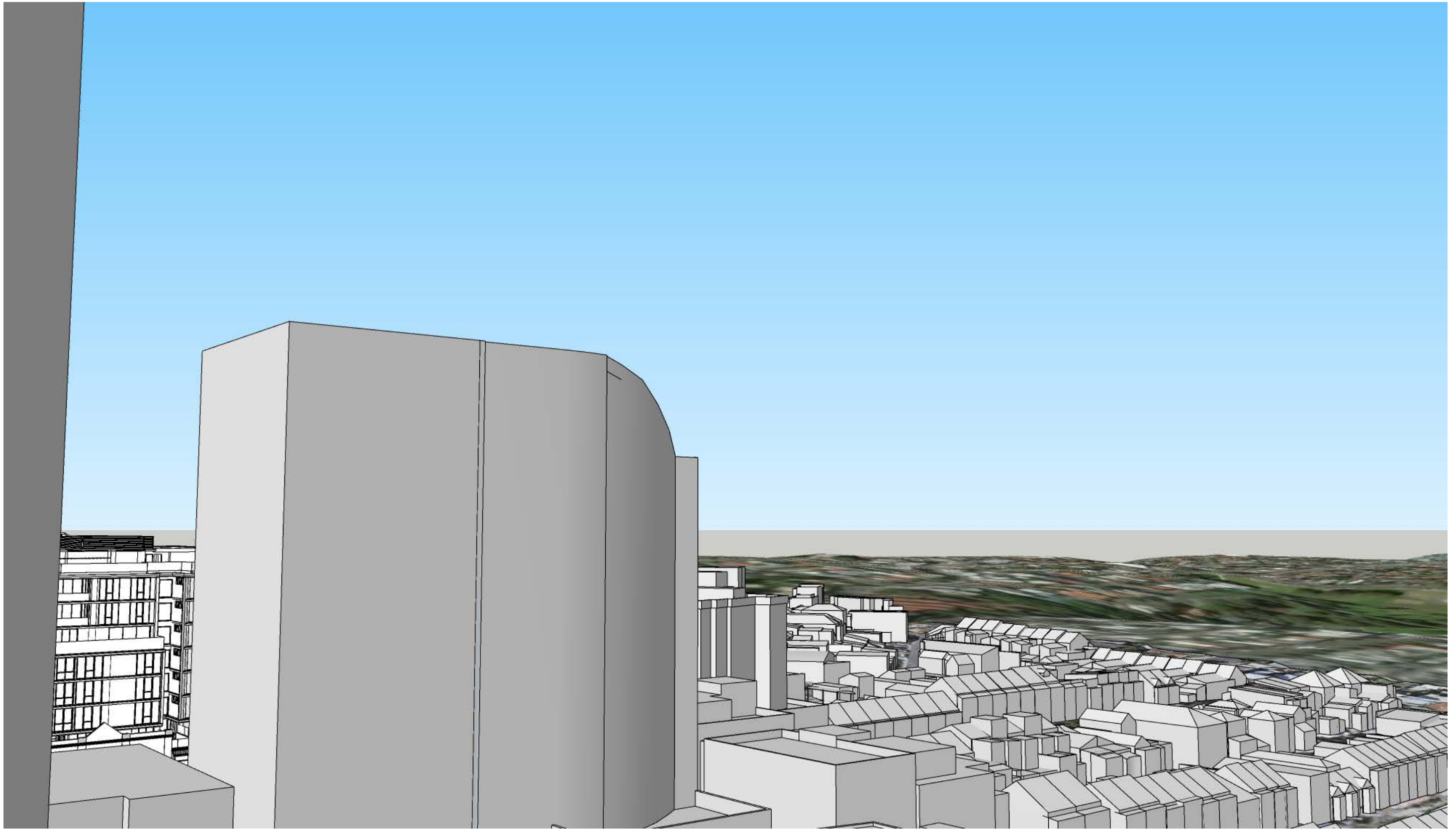
EASTGATE WEST TOWER (71 - 85 SPRING STREET)



VIEW C - DA APPROVED

RL 115.75 - EYE LEVEL STANDING AT MID TOWER LEVEL

EASTGATE WEST TOWER (71 - 85 SPRING STREET)



VIEW C - SECTION 4.55

RL 115.75 - EYE LEVEL STANDING AT MID TOWER LEVEL

EASTGATE WEST TOWER (71 - 85 SPRING STREET)



VIEW C - DA APPROVED

RL 150 - EYE LEVEL STANDING AT PENTHOUSE LEVEL

EASTGATE WEST TOWER (71 - 85 SPRING STREET)

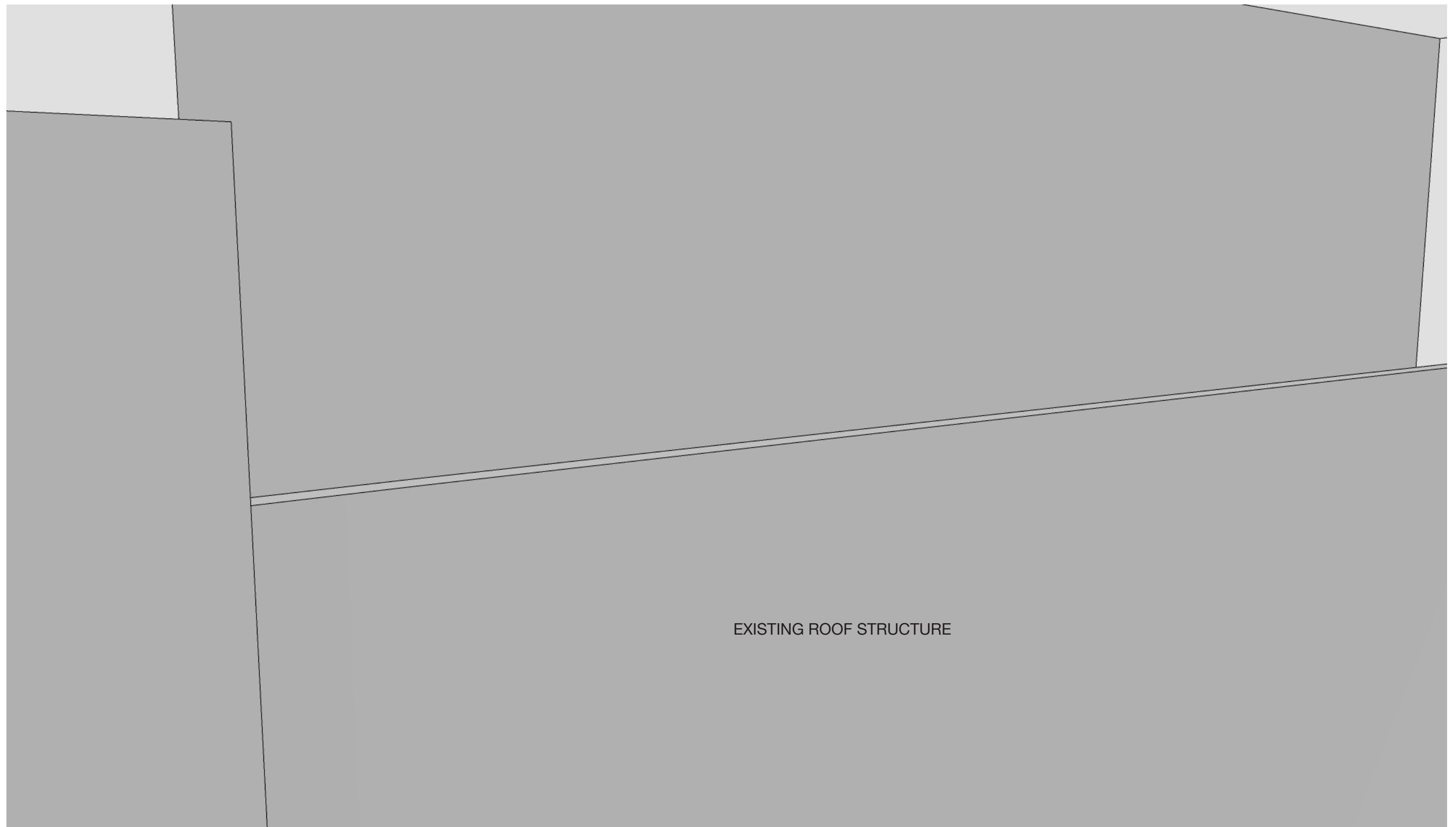


VIEW C - SECTION 4.55

RL 150 - EYE LEVEL STANDING AT PENTHOUSE LEVEL

EASTGATE WEST TOWER (71 - 85 SPRING STREET)

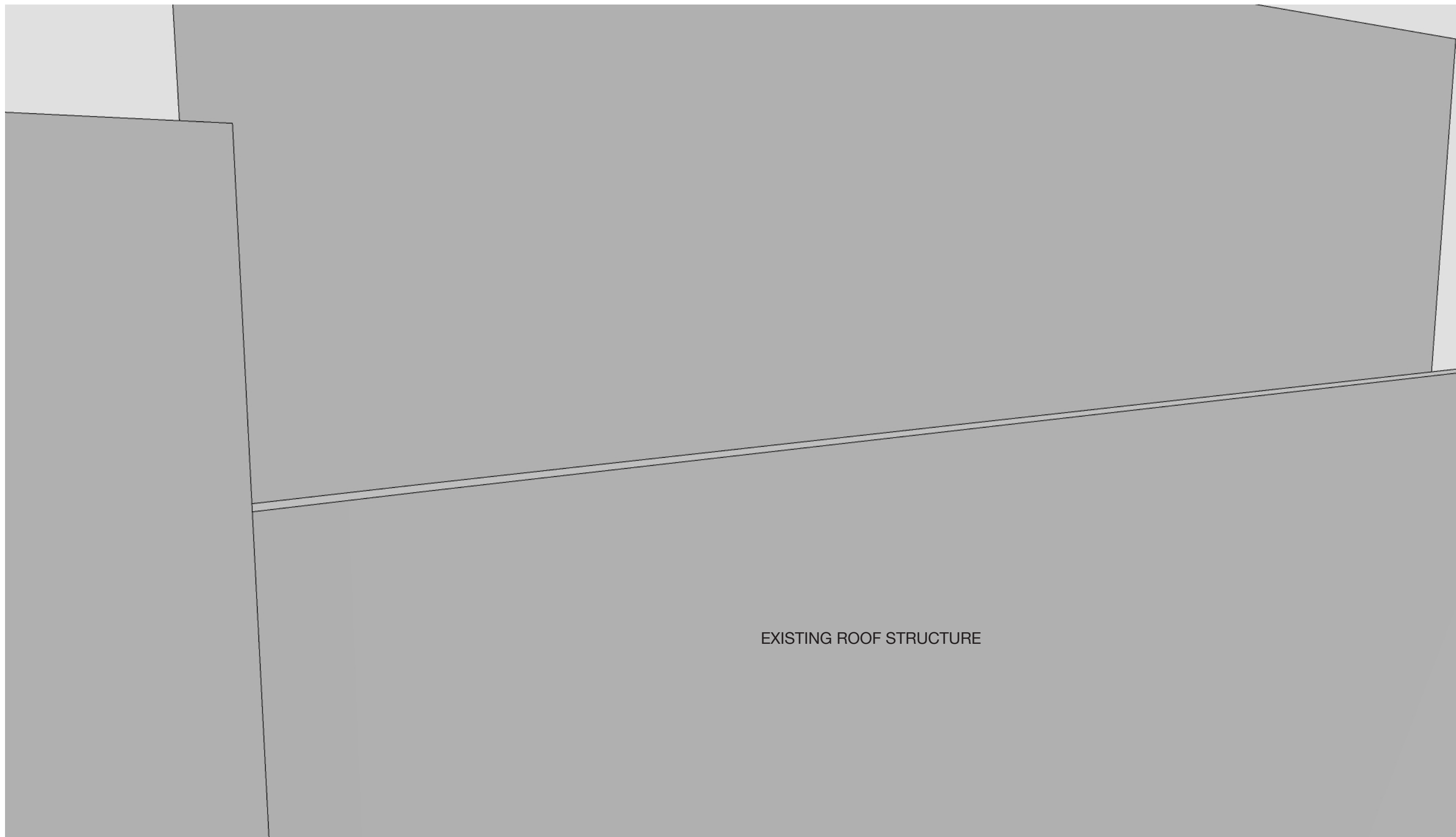
4.0 EASTGATE EAST TOWER (71-85 SPRING STREET)



VIEW D - DA APPROVED

RL 97.35 - EYE LEVEL STANDING AT PENTHOUSE LEVEL

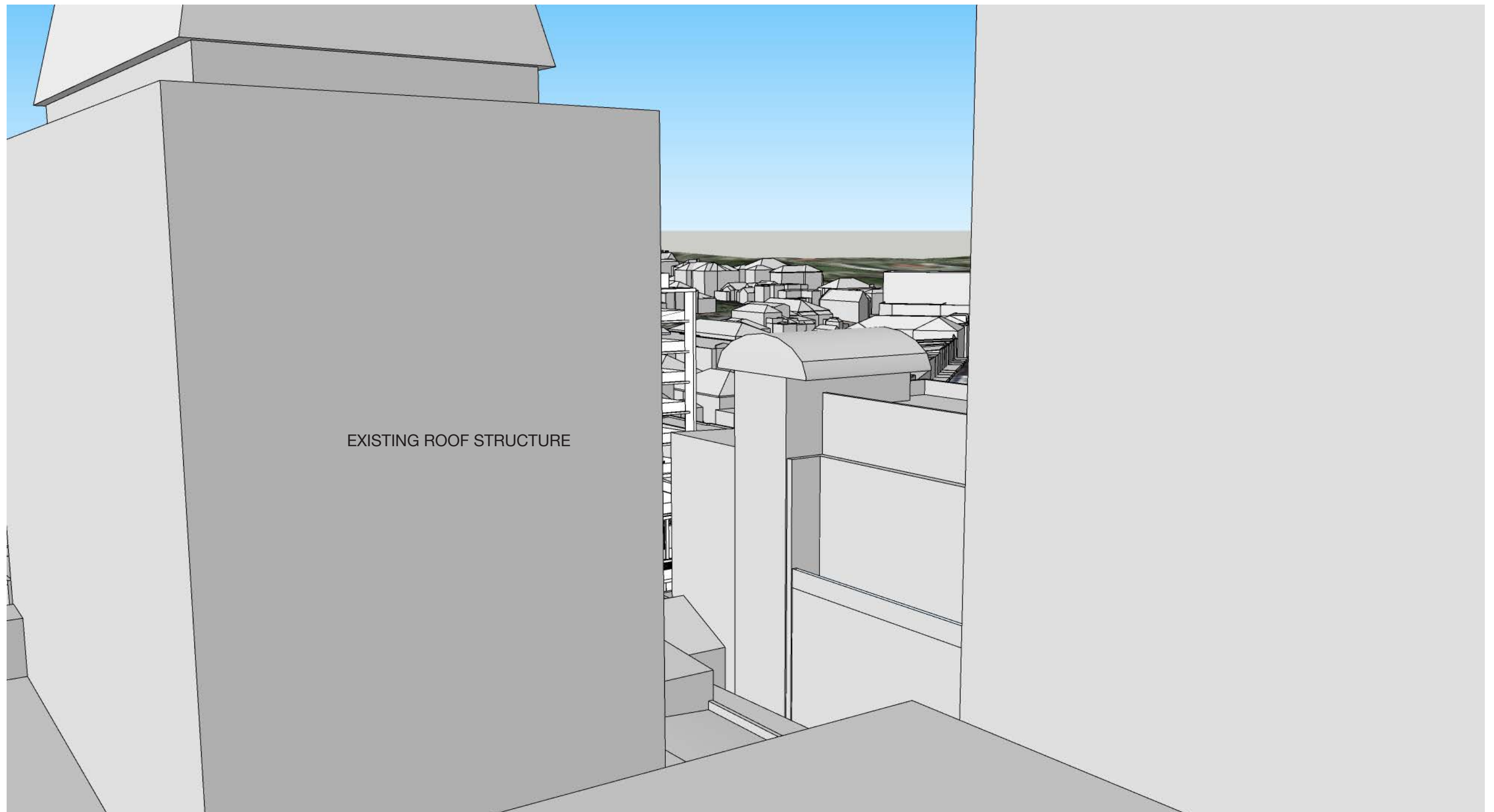
EASTGATE EAST TOWER (71 - 85 SPRING STREET)



VIEW D - SECTION 4.55

RL 97.35 - EYE LEVEL STANDING AT PENTHOUSE LEVEL

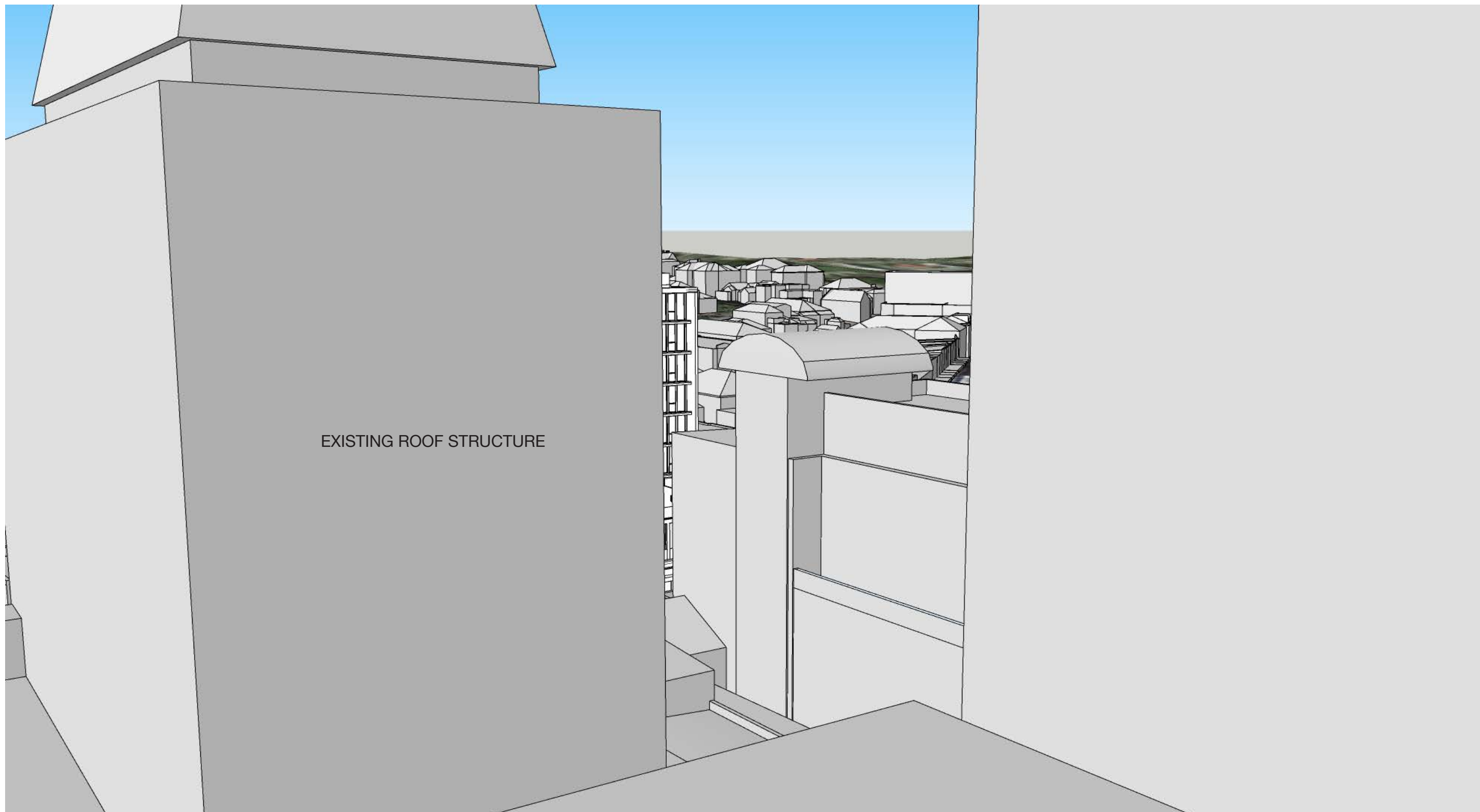
EASTGATE EAST TOWER (71 - 85 SPRING STREET)



VIEW D - DA APPROVED

RL 115.75 - EYE LEVEL STANDING AT PENTHOUSE LEVEL

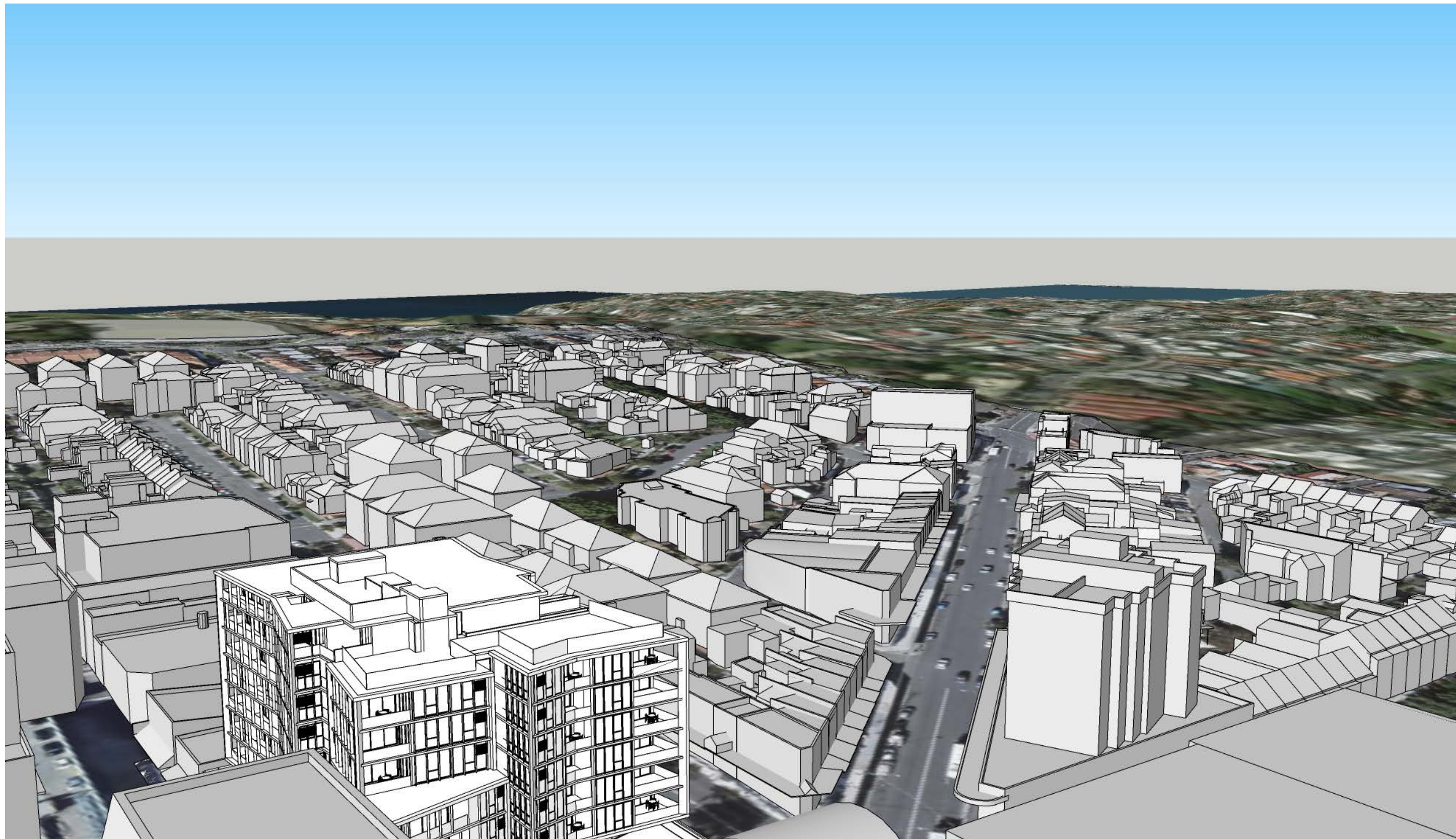
EASTGATE EAST TOWER (71 - 85 SPRING STREET)



VIEW D - SECTION 4.55

RL 115.75 - EYE LEVEL STANDING AT PENTHOUSE LEVEL

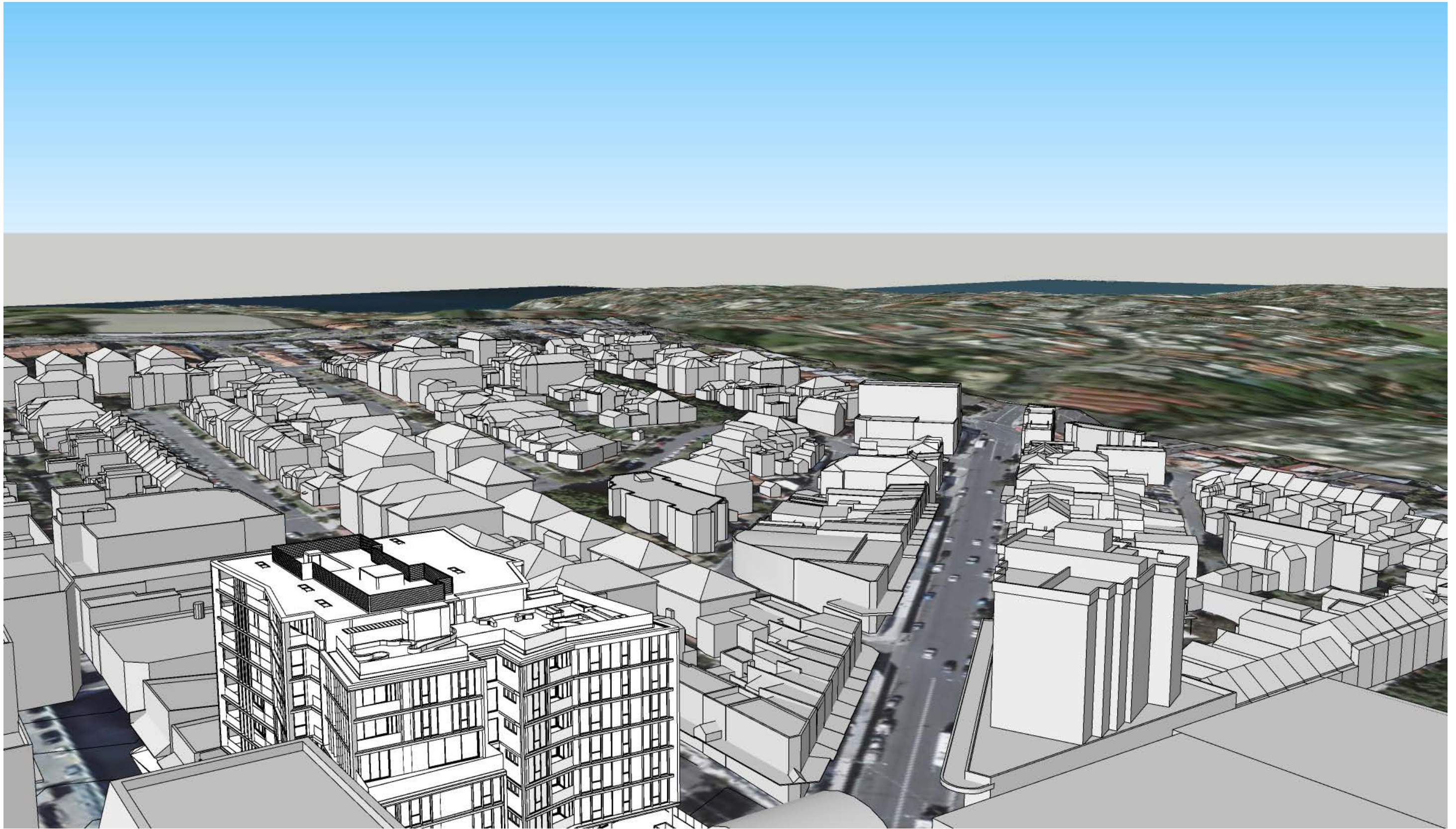
EASTGATE EAST TOWER (71 - 85 SPRING STREET)



VIEW D - DA APPROVED

RL 150 - EYE LEVEL STANDING AT PENTHOUSE LEVEL

EASTGATE EAST TOWER (71 - 85 SPRING STREET)

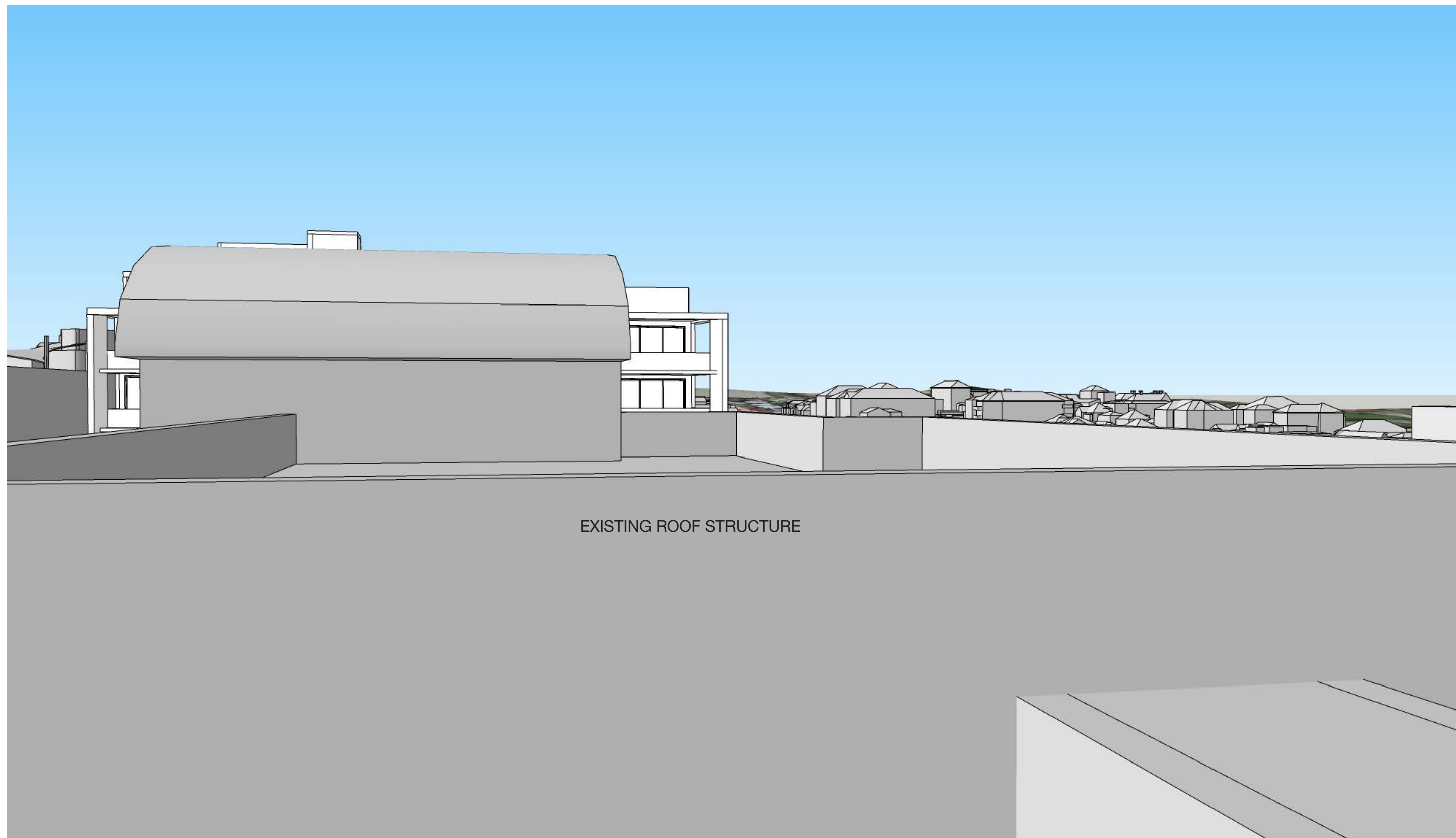


VIEW D - SECTION 4.55

RL 150 - EYE LEVEL STANDING AT PENTHOUSE LEVEL

EASTGATE EAST TOWER (71 - 85 SPRING STREET)

5.0 GENOA TOWER (80 EBLEY STREET)

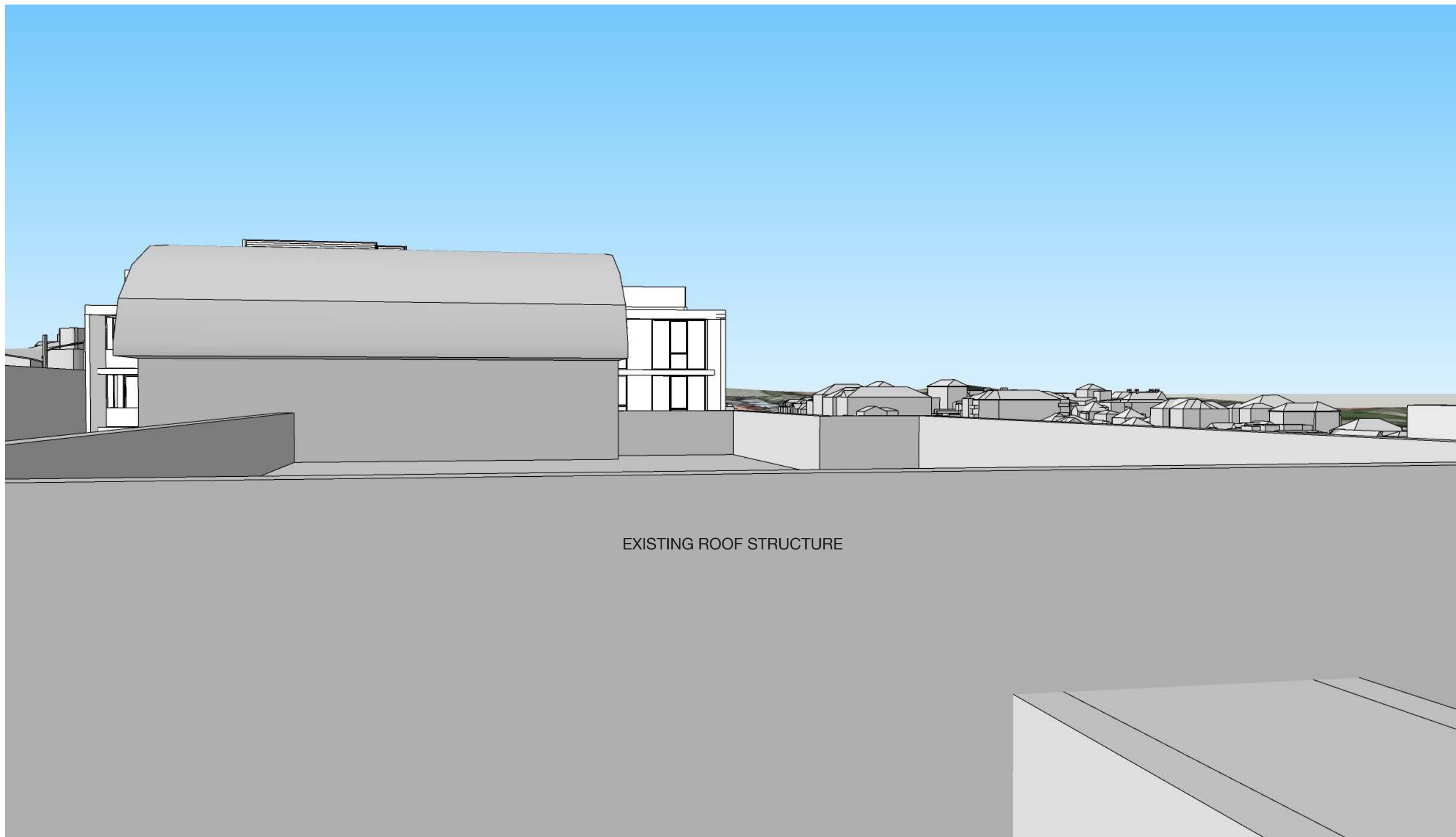


EXISTING ROOF STRUCTURE

VIEW E - DA APPROVED

RL 105.5 - EYE LEVEL STANDING AT MID TOWER LEVEL

80 EBLEY STREET (GENOA TOWER)



EXISTING ROOF STRUCTURE

VIEW E - SECTION 4.55

RL 105.5 - EYE LEVEL STANDING AT MID TOWER LEVEL

80 EBLEY STREET (GENOA TOWER)



VIEW E - DA APPROVED

RL 111.2 - EYE LEVEL STANDING AT UPPER TOWER LEVEL

80 EBLEY STREET (GENOA TOWER)



VIEW E - SECTION 4.55

RL 111.2 - EYE LEVEL STANDING AT UPPER TOWER LEVEL

80 EBLEY STREET (GENOA TOWER)



VIEW E - DA APPROVED

RL 128.37 - EYE LEVEL STANDING AT PENTHOUSE LEVEL

80 EBLEY STREET (GENOA TOWER)



VIEW E - SECTION 4.55

RL 128.37 - EYE LEVEL STANDING AT PENTHOUSE LEVEL

80 EBLEY STREET (GENOA TOWER)



www.groupgsa.com
ARN 3990

Sydney

Level 7, 80 William Street
East Sydney NSW 2011
Australia
T +612 9361 4144
E sydney@groupgsa.com

Melbourne

Level 1, 104 Exhibition Street
Melbourne VIC 3000
Australia
T +613 9416 5088
E melbourne@groupgsa.com

Brisbane

Level 14, 100 Edward Street
Brisbane QLD 4000
Australia
T +617 3210 2592
E brisbane@groupgsa.com

Gold Coast

Suite 30201 Southport Central Tower 3,
Level 2, 9 Lawson St
Southport QLD 4215
Australia
T +617 3036 4200
E goldcoast@groupgsa.com

Perth

Level 2, 307 Murray Street
Perth WA 6000
Australia
T +618 6313 2125
E perth@groupgsa.com

Beijing

F2-S01-R09, Soho 3Q Guanghualu SOHO2 N.9
Guanghualu, Chaoyang District, Beijing
PR China
T +86 (0)10 5327 4697
E beijing@groupgsa.com

Shanghai

Room 407, No. 71, Xi Suzhou Road Jingan District
Shanghai 200041
PR China
T +86 (0)21 5213 6309
E shanghai@groupgsa.com

Ho Chi Minh City

19th Floor – Havana Tower, 132 Ham Nghi,
Ben Thanh Ward, District 1, Ho Chi Minh City
Vietnam
T +84 8 3827 5385
E hcmc@groupgsa.com

Hanoi

2nd Floor, 5A/111 Xuan Dieu Street, Quang Tay Ward
Tay Ho District, Ha Noi
Vietnam
T +84 24 3266 8025
E hanoi@groupgsa.com